

Downtown Industrial District

Macon, Bibb County, Georgia



GENERAL INFORMATION

Site ID: 02105

SIZE

Available: 500 Acres
Total: 1,700 Acres
Largest Tract: 25 Acres

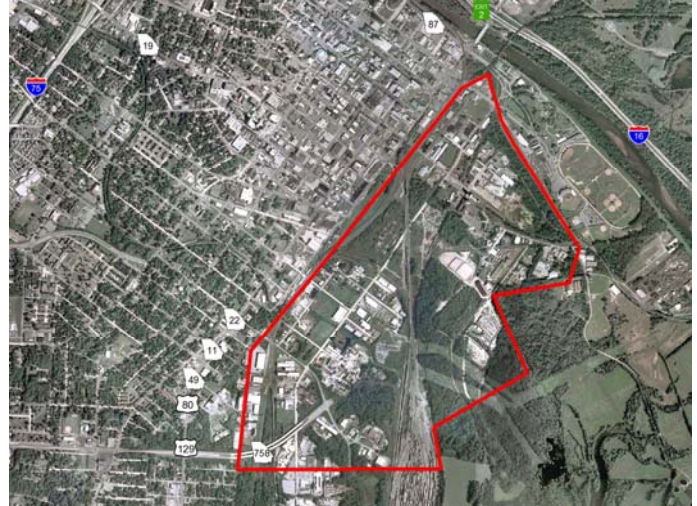
ZONING

Mixed Use

SURROUNDING LAND USE

North: Commercial
East: Manufacturing
South: Manufacturing
West: Manufacturing

Inside City Limits: Yes
Police: City of Macon
Fire: City of Macon
Fire Insurance Rating: Class 1



Georgia Electric Membership Corporation

TRANSPORTATION

LOCATION

Atlanta: 77.6 mi.
Macon: 2.1 mi.

HIGHWAYS

Interstate 16: 1 mi.
US 80: Adjacent to site
Direct Access: US 129

RAILROAD AT SITE

Norfolk Southern Railroad

INTERMODAL SERVICE

Atlanta, GA: 76.9 mi.

PORT ACCESS

Savannah, GA: 172 mi.
Brunswick, GA: 187 mi.

AIRPORTS

International: ATL
Hartsfield-Jackson Atlanta International,
72.9 mi.
Commercial: MCN
Middle Georgia Regional, 8.4 mi.
General: MCN and MAC
Middle Georgia Regional, 8.4 mi.
Runway Length: 6,501 ft.
Herbert Smart Downtown Airport, 4.6 mi.
Runway Length: 4,695 ft.

UTILITIES

WATER

Provider: Macon Water Authority

SEWER

Provider: Macon - Lower
Poplar Street WPCP

ELECTRICAL SERVICE

Provider: Georgia Power Company

NATURAL GAS

Provider: Atlanta Gas Light
Line Size: 8 in.

For more information, contact Patrick Topping, CEcD at 478-621-2030,
ptopping@maconworks.com, or visit www.maconworks.com

Downtown Industrial District

Macon, Bibb County, Georgia

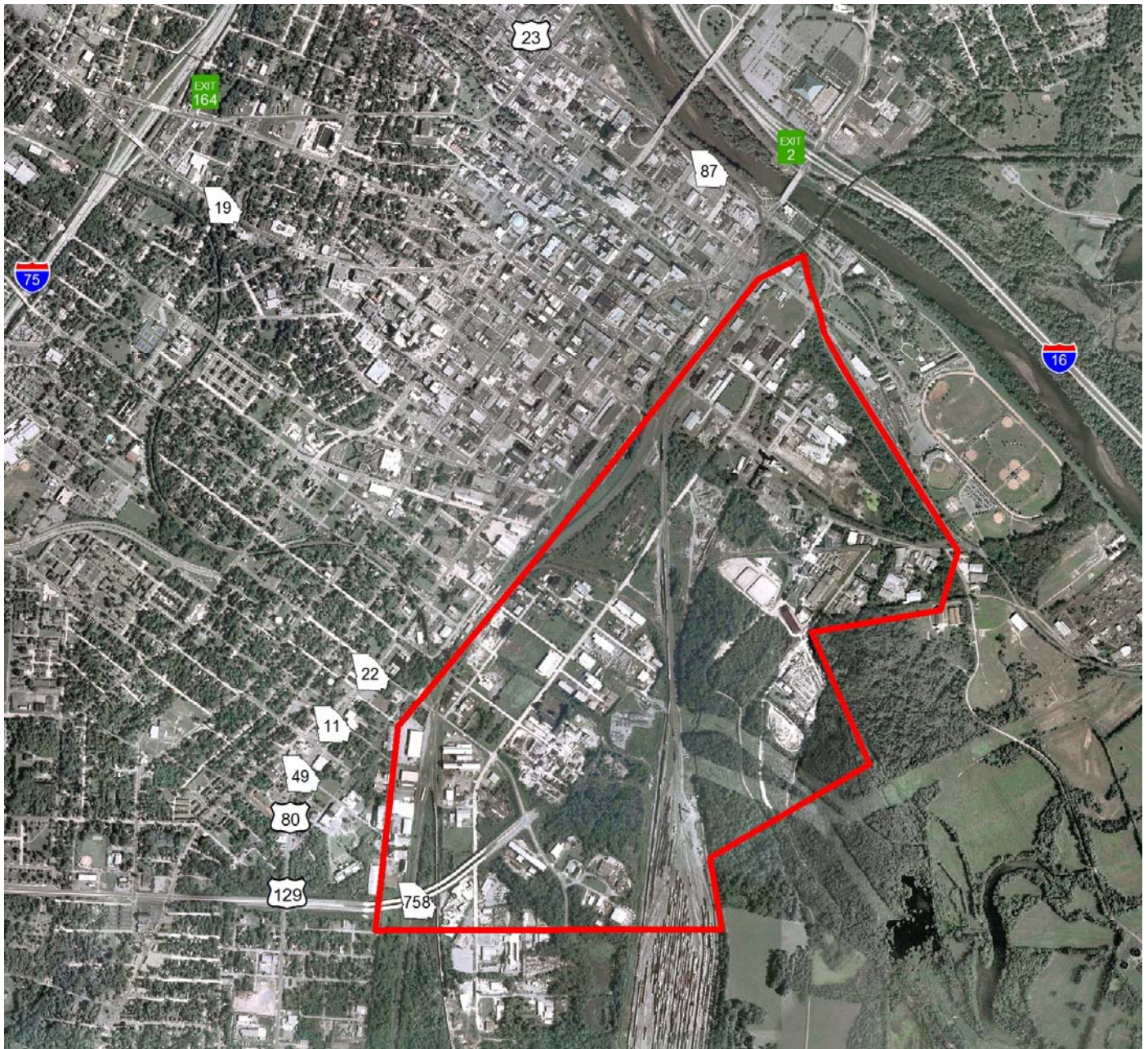


Photo Credit:  **GEMC**
Georgia Electric Membership Corporation

For more information, contact Patrick Topping, CECD at 478-621-2030, ptopping@maconworks.com, or visit www.maconworks.com