

# Airport South Industrial Park

Macon, Bibb County, Georgia



## GENERAL INFORMATION

### SIZE

**Available:** 86.89 Acres  
**Total:** 346 Acres  
**Largest Tract:** 40.74 Acres

### ZONING

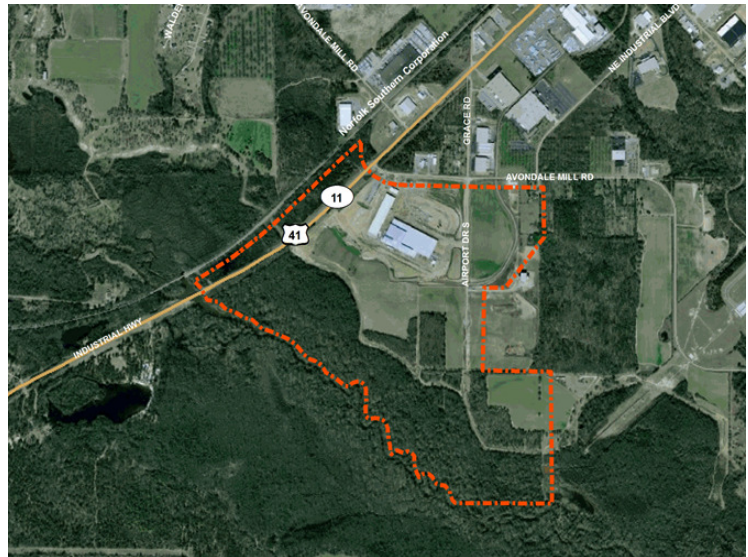
Heavy Industrial

### SURROUNDING LAND USE

**North:** Manufacturing  
**East:** Agricultural  
**South:** Agricultural  
**West:** Manufacturing

**Inside City Limits:** No  
**Police:** Bibb County  
**Fire:** Bibb County  
**Fire Insurance Rating:** Class 3  
**Protective Covenants:** No

Site ID: 02102



Georgia Power Company

## TRANSPORTATION

### LOCATION

**Atlanta:** 80 mi.  
**Macon:** 11 mi.

### HIGHWAYS

**Interstate 75:** 3 mi.  
**Interstate 475:** 5 mi.  
**US 41:** Adjacent to Site  
**GA 247:** Adjacent to Site  
**Direct Access:** GA 49

### RAILROAD AT SITE

Norfolk Southern Railroad

### INTERMODAL SERVICE

**Atlanta, GA:** 86 mi.  
**Fairburn, GA:** 80 mi.

### PORT ACCESS

**Savannah, GA:** 155 mi.  
**Brunswick, GA:** 166 mi.

### AIRPORTS

**International: ATL**  
Hartsfield-Jackson Atlanta International,  
79 mi.  
**Commercial: MCN**  
Middle Georgia Regional, 2 mi.  
**General: MCN and MAC**  
Middle Georgia Regional, 2 mi.  
Runway Length: 6,501 ft.  
Herbert Smart Downtown Airport, 12 mi.  
Runway Length: 4,695 ft.

## UTILITIES

### WATER

**Provider:** Macon Water Authority  
Line Size: 12 in.  
Capacity: 81.56 mgd.

### SEWER

**Provider:** Macon-Lewis B.  
Wilson Airport WPCP  
Line Size: 12 in.  
Capacity: 0.26 mgd.

### ELECTRICAL SERVICE

**Provider:** Georgia Power Company  
Flint Energies

### NATURAL GAS

**Provider:** Atlanta Gas Light  
Line Size: 4 in.

For more information, contact Patrick Topping, CEcD at 478-621-2030,  
[ptopping@maconworks.com](mailto:ptopping@maconworks.com), or visit [www.maconworks.com](http://www.maconworks.com)